

PePLink Balance for Schools

Increase Bandwidth while Reducing Costs

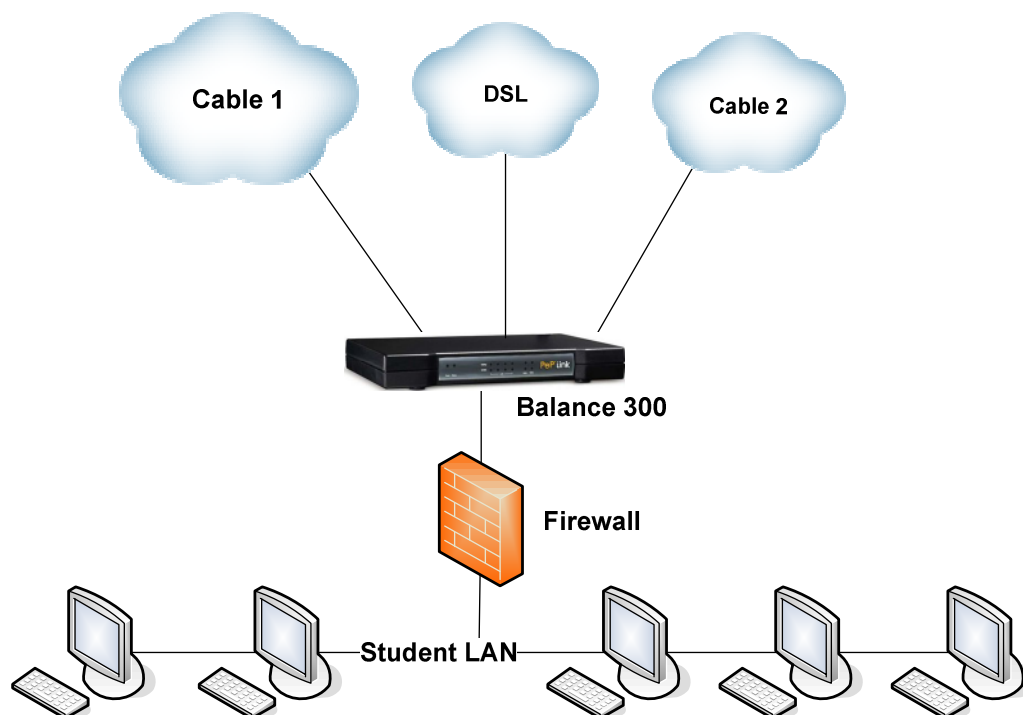
Background

Network managers in schools are often faced with problems of (1) rapid growth in demand for more Internet bandwidth, (2) existing T1 line being too expensive¹, and yet (3) difficulty in expanding the bandwidth.

PePLink Balance Is Your Answer

Look no further. PePLink Balance is the answer to all of the above.

- Dynamically add up to three WAN connections
- Replace high-cost T1 with high-speed, low-cost Cable or DSL connections
- Increase network availability by having multiple WAN links easily and transparently (with Drop-in Mode²)



¹ A T1 line in US approx. costs USD 600~1000 per month on average. (2005 pricing)

² Details of Drop-In Mode can be found in its How-to document, at <http://download.peplink.com/pub/howto-bal-dropin.pdf>

ROI Analysis

Before:

- 1x T1 to Internet
- Bandwidth 1.544M
- Charge: USD 800 per month

After:

- Cut the T1 line (you may retain your IP address range; contact your ISP for details).
- 2 x Cable connections @ USD 100 per month
- 1 x DSL connections @ USD 100 per month
- Total Bandwidth 10+ / 3+ M (upstream/downstream)

Item	Month 1	Month 2	Month 3	...	Month 10	Month 11	Month 12
Balance 300	-995	0	0		0	0	0
Cable x 2	-200	-200	-200		-200	-200	-200
DSL x 1	-100	-100	-100		-100	-100	-100
T1	800	800	800		800	800	800
Cash Flow	-495	500	500	...	500	500	500
Summary							
Investment:		995					
Savings:	Per Month	500					
	1st 6 Mths	2,005					
	1st Year	5,005					

The investment of Balance is paid back in less than two months!

Summary of Benefits

- Drop-in Mode makes installation extremely easy.
- No changes to existing network elements upon installation.
- 30-day Money-back Guarantee.
- Risk-free, starting saving today.