

Drop-in Operational Mode

Background

When a Peplink Balance operates in Drop-in Mode, also known as transparent or bridge mode, it forwards data traffic like a Layer 2 switch. This allows the device to be transparently deployed into an existing network to load balance traffic with additional WAN link(s), without affecting the IP settings of the router, firewall and hosts on the network.

Drop-in Mode Deployment of Peplink Balance

In this application, the hosts accessible from the Internet may use private addresses or public addresses assigned by the Internet Service Provider (ISP). No hardware or software configuration changes are required to the firewall or to the internet router already in place. Since there is no need to re-configure IP settings of the existing equipment, the Balance is completely transparent to the ISPs. A typical deployment scenario is illustrated in Figure 1 below.

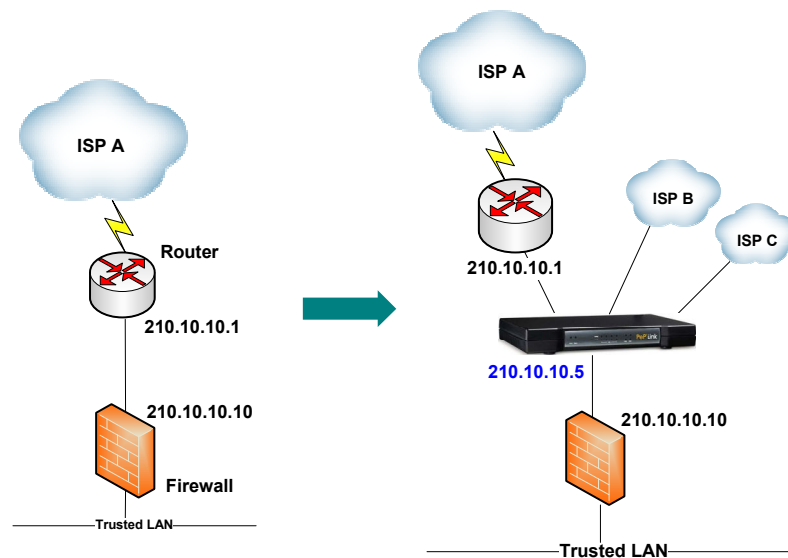


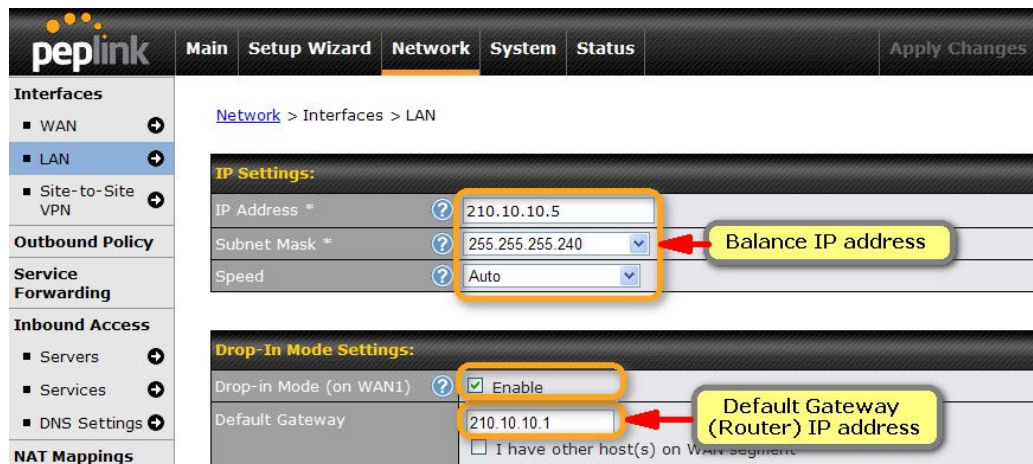
Figure 1 – Before and After Peplink Balance Installation

The IP addresses are assigned for illustrative purposes only.

Drop-in Mode Configuration

The following configuration steps are completed to set up Drop-in Mode.

1. Go to **Network > Interfaces > LAN**
2. Fill in information and enable Drop-in Mode. The following screenshot illustrates the settings according to our example.
3. Save and apply changes.



Summary of Benefits of Drop-in Mode

- Drop-in Mode makes installation extremely easy, while effectively enabling the installation of multiple WAN connections.
- No configuration changes are required to existing network elements upon installation.
- Drop-in Mode simplifies network changes and troubleshooting for network administrators.

Other Considerations and Benefits

For further details on the applications and benefits of the Peplink Balance series, please visit our website at www.peplink.com.